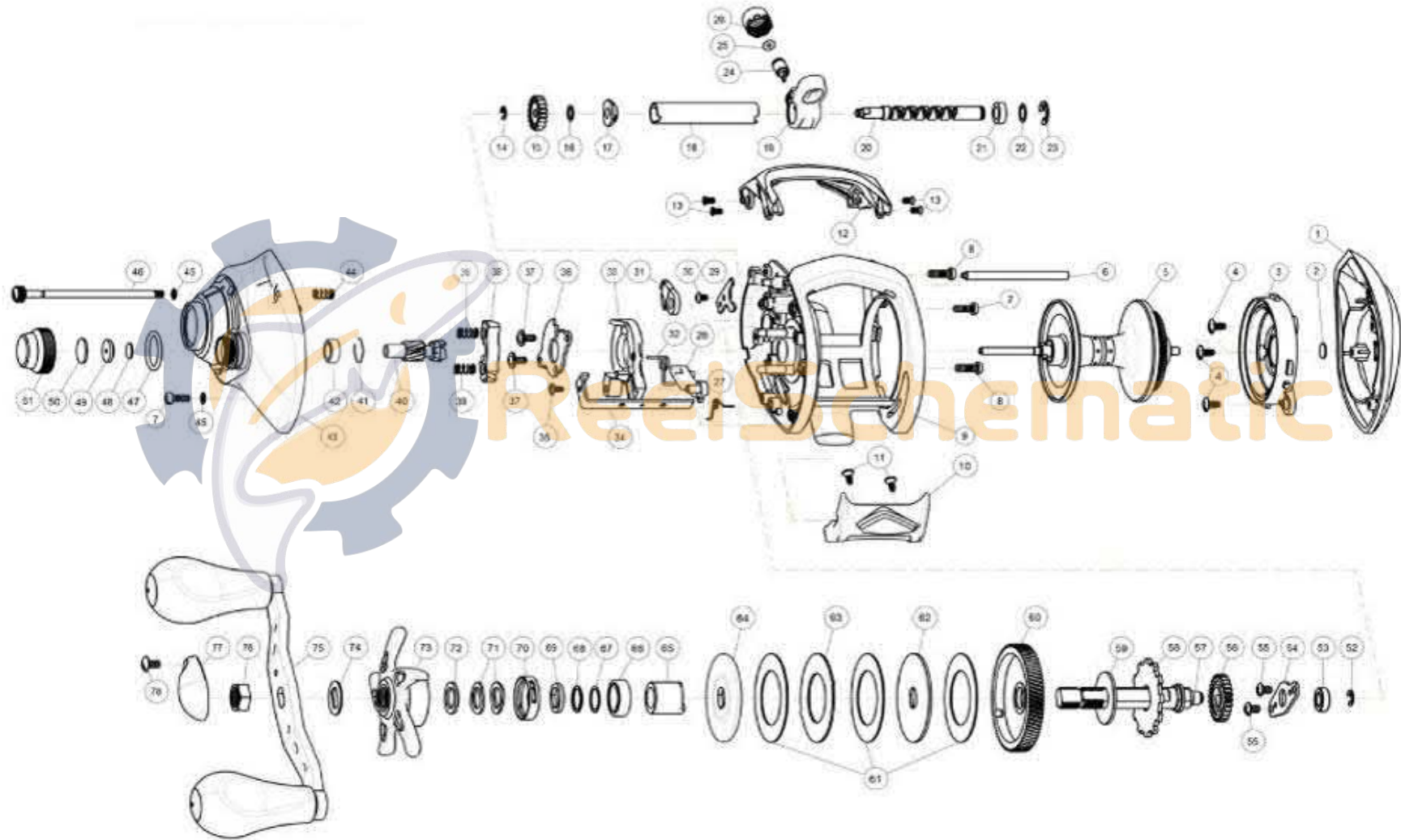


QUANTUM[®]

MO301SPT



QUANTUM

MO301SPT

Quantum MO301SPT Baitcast Reel Part List

| Key # | Description | Part No. | Qty. | Key # | Description | Part No. | Qty. |
|-------|----------------------------------|----------|------|-------|------------------------------------|-----------|------|
| 1 | Palm Side Cover | KA023-02 | 1 | 40 | Pinion Gear | KA011-02 | 1 |
| 2 | Spool Tension Shim | QW032-04 | 1 | 41 | Tension Knob Ball Bearing Retainer | PW080-01 | 1 |
| 3 | Spool Cover Assembly | KA351-01 | 1 | 42 | Tension Knob Ball Bearing | SW017-01 | 1 |
| 4 | Spool Cover Screw | QW125-02 | 3 | 43 | Gear Side Cover Assembly | KA324-04 | 1 |
| 5 | Spool Assembly | JA321-02 | 1 | 44 | Thumb Screw Spring | JA096-01 | 1 |
| 6 | Stabilizer Bar | JA061-01 | 1 | 45 | Thumb Screw Washer | LA032-01 | 2 |
| 7 | Gear Side Cover Screw "A" | BV123-05 | 2 | 46 | Thumb Screw | JA050-01 | 1 |
| 8 | Gear Side Cover Screw "B" | KF123-03 | 2 | 47 | Tension Knob O-Ring | RF101-01 | 1 |
| 9 | Frame Assembly | KA301-02 | 1 | 48 | Spool Tension Washer | QW032-04 | 1 |
| 10 | Thumb Bar | JA009-02 | 1 | 49 | Spool Tension Collar | QW081-01 | 1 |
| 11 | Thumb Bar Screw | SB050-03 | 2 | 50 | Spool Cushion Washer | QW082-01 | 1 |
| 12 | Front Support | KA009-02 | 1 | 51 | Spool Tension Knob | JA033-01 | 1 |
| 13 | Front Support Screw | KW107-01 | 4 | 52 | E-Clip | NX092-01 | 1 |
| 14 | E-Clip | NX090-01 | 1 | 53 | Crank Shaft Bushing (L) | ZW017-02 | 1 |
| 15 | O/S Pinion Gear | JA085-01 | 1 | 54 | Crank Shaft Retainer | JA002-01 | 1 |
| 16 | Washer | PA035-01 | 1 | 55 | Crank Shaft Retainer Screw | QW123-04 | 2 |
| 17 | Worm Shaft Bushing - Gear Side | RA067-01 | 1 | 56 | O/S Drive Gear | JA112-01 | 1 |
| 18 | Worm Shaft Guide | JA016-01 | 1 | 57 | Crank Shaft | JA008-02 | 1 |
| 19 | Line Guide Carrier Assembly | JA347-02 | 1 | 58 | Trip Ratchet | JA083-01 | 1 |
| 20 | Worm Shaft | JA072-01 | 1 | 59 | Ratchet Washer | KA111-01 | 1 |
| 21 | Worm Shaft Bushing - Palm Side | JA017-01 | 1 | 60 | Drive Gear | KA012-02 | 1 |
| 22 | Washer | EB032-02 | 1 | 61 | Drag Disc | JA059-01 | 3 |
| 23 | E-Clip | BF092-01 | 1 | 62 | Drag "D" Washer | KA045-01 | 1 |
| 24 | Line Guide Pawl | KW006-01 | 1 | 63 | Drag Key Washer | JA048-01 | 1 |
| 25 | Line Guide Pawl Washer | BV035-03 | 1 | 64 | Drag Washer | FB045-01 | 1 |
| 26 | Line Guide Pawl Screw | KW007-01 | 1 | 65 | One Way Clutch Sleeve | JA052-01 | 1 |
| 27 | Kick Lever Spring | KA097-01 | 1 | 66 | Crank Shaft Ball Bearing | TW058-03 | 1 |
| 28 | Kick Lever | KA077-01 | 1 | 67 | Crank Shaft Ball Bearing Washer | TW035-02 | 1 |
| 29 | Worm Shaft Retaining Plate | JA030-01 | 1 | 68 | Seal Rubber | JA155-01 | 1 |
| 30 | Worm Shaft Retaining Plate Screw | JA107-01 | 1 | 69 | Collar | JA081-01 | 1 |
| 31 | Anti Reverse Pawl Assembly | JA363-01 | 1 | 70 | Drag Click Spring Assembly | YX4114-01 | 1 |
| 32 | Release Slider Spring | KA104-01 | 1 | 71 | Spring "D" Washer | JX046-01 | 2 |
| 33 | Release Slider | KA039-01 | 1 | 72 | Star Drag Washer | JA032-01 | 1 |
| 34 | Release Slider Link | JA036-01 | 1 | 73 | Star Drag | GW055-01 | 1 |
| 35 | Release Slider Link Screw | EB125-01 | 1 | 74 | Handle Washer | JA054-01 | 1 |
| 36 | Release Slider Plate | JA161-01 | 1 | 75 | Handle Assembly | KA318-01 | 1 |
| 37 | Release Slider Plate Screw | CX076-01 | 2 | 76 | Handle Nut | QW003-02 | 1 |
| 38 | Pinion Yoke | FB025-01 | 1 | 77 | Handle Nut Retainer | KV034-01 | 1 |
| 39 | Pinion Yoke Spring | KW040-01 | 2 | 78 | Handle Nut Retainer Screw | QW123-03 | 1 |